



Fitgenix
Life Time Fitness

Life Time Fitness



Fitgenix
Life Time Fitness

Fitness is not a Destination. It is a way of Life



Our Mission

We are committed to be the TOP BRAND OF COMMERCIAL FITNESS.

What We focus on :

- Good Safety & Considerate Design
- Best Quality High Effective Price
- Excellent Sale & Service





Fitgenix
Life Time Fitness

Life Time Fitness



CARDIO

SERIES



Fitgenix
Life Time Fitness



THE **CARDIO** SERIES ADVANTAGES



TREADMILL - FG5001 (X9)

Drive Motor : AC Motor, 3.0HP
Speed Range : 0.8-20km/h
Incline Motor : HP 1/8
Running Area : 580x1570 mm
Maximum User's Weight : 180 kg
Dimensions : 2190x960x1580 mm



TREADMILL - FG5002 (X9 PLUS)

Drive Motor : AC Motor, 3.0HP
Speed Range : 0.8-20km/h
Incline Motor : HP 1/8
Running Area : 580x1570 mm
Maximum User's Weight : 180 kg
Dimensions : 2190x960x1580 mm

TREADMILL FG 5012

Gross Weight : 265Kg

Net Weight : 200Kg

Speed : 1-20km/h

Incline : 0-16%

Power : Continuous 2.9Kw(3.9Hp)

Max : 4.3Kw(5.3Hp)

Controller : AC transducer

Shipping Dimensions(mm) : 2290x1020x695

Running Area(mm) : 1600(L)x580(W)



TREADMILL FG 5013

Gross Weight : 300Kg

Net Weight : 200Kg

Speed : 1-25km/h

Power : Continuous 3.9Kw(5.3Hp)

Max : 5Kw(6.8Hp)

Roller : 100mm

Running Area(mm) : 1620(L)x580(W)

Max User Weight : 182Kg

5.3HP Motor



UPRIGHT BIKE FG5003-U

Self-power: Self-generated
Resistance system position: front handlebar and meter
Heart rate bar: front handlebar
Seat adjustment: self-adaptive resistance
Max user weight: 182 kg
Max size: 1190x665x1525
Packing dimension: 1265x530x780
Resistance system: Electric generator



RECUMBENT BIKE FG5004-R

Self-power: Self-generated
Resistance system position: front handlebar and meter
Heart rate bar: Both sides of the seat
Seat adjustment: Single handle under seat
Cushion adjustment: yes
Max size: 1656x490x710
Max user weight: 181kgs
Packing dimension: 1710x525x752
Resistance system: Electric generator



ELLIPTICAL FG5005

ipad holder : Yes
Frame : Hanging Precursor
Step Stride : $\Phi 60 \times T 3.0 \times 760 \text{mm}$
Joint : Full bearing (C3)
Speed Rate : 300/60; 120/30
Q-factor : 70mm
Power : At 60RPM, L40>250W
Heart rate : Handle heart rate test
Resistance : 40-segment magnetron adjustment
Max load : 180kg



STAIR MASTER FG5006

Console Screen : 0.56" Led+8x8 Dot Matrix
Resistance Level : 1-20
Staircase Dimension : 550x278x205mm
Gross Weight : 226/310KG
Max User Weight : 180 KG





CURVE TREADMILL FG5007

Running Belt Size : 1700mmx440mm (HxW)

Treadmill Size : 1975mmx855mmx1580mm (LxWxH)

Speed : Unlimited

NW/GW (kg) : 165KG/220KG

*Zero - Energy Consumption

*Pure Green Energy Treadmill



ROWER FG6050

Specification : -

Max User Weight : 150kg,

Dimension(mm) : 2720x525x110 (LxWxH)

machine weight : 52.4kg

SPINNING BIKE FG5008

Belt Driven :
Flywheel : 20kgs
Seat : HS-3001
Pedal : E-14
Bottom Bracket : SW-86
Crank #800



SPINNING BIKE FG5009

Magnetic Brake Control :
Flywheel : 15kgs
Belt Driven, Aluminum Seat Post & Seat Slider,
Seat : CI-3017A
Pedal : SPD
Bottom Bracket : UN-55
Crank #800



SPINNING BIKE FG5010

Flywheel : 22KG

Brake System : Motorized Magnetic

Computer : Time, Speed, Distance, RPM, Pulse
Calories, H.R.C, Watt, Bluetooth

With Water Bottle Holder

N.W / G.W : 59KG / 63KG



SPINNING BIKE FG5011

Flywheel : 23KG

Brake System : Friction

Computer : Time, Speed, Distance, Calories, Pulse
N.W / G.W : 46KG / 51KG



Life Time Fitness

68 SERIES

 *Fitgenix*
Life Time Fitness



THE 68 SERIES ADVANTAGES

Heavy duty translucent shield

provides privacy and safety.



Unilateral and converging arms

create single or dual-arm exercises that build strength with balance and symmetry.



Gas-Spring assisted seat and back pad

help users find the best position easily



Durable EXERFLEXPRO cable & Precision Machined Pulley

ensures unparalleled safety with smoother path of motion.





CHEST PRESS FG6001

Main frame :-

Material: Q235A, specification: gantry frame 150x50xt 2.0,
Sub-frame 120x50xt2.0

Wire rope :-

Steel cable : PA material, Specification: Φ 5.6

Dimension (mm) : 1471x1395x1820(LxWxH)

Color : Black Silver & Flash silver black ash

Seat mat : Adjustable, PU foam; Color: dark green

Weight plates : Maximum 107Kg; Minimum 5kg

BUTTERFLY FG6002

Main frame :-

Material: Q235A, specification: gantry frame 150x50xt2.0,
Sub-frame 120x50xt2.0

Wire rope :-

Steel cable : PA material, Specification: Φ 5.6;

Dimension(mm) : 1352x1531x1544(LxWxH)

Color : Black Silver & Flash silver black ash

Seat mat : Adjustable, PU foam; Color: dark green

Weight plates : Maximum 97Kg; Minimum 5kg





PEC FLY/REAR DELTOID FG6003

Main frame :-

Material: Q235A, specification: gantry frame 150x50x2.0,
Sub-frame 120x50x2.0

Wire rope :-

Steel cable: PA material, Specification: Φ 5.6;
Dimension (mm) : 1136x825x2043(LxWxH)
Color : Black Silver & Flash silver black ash
Seat mat : Adjustable, PU foam; Color: dark green
Weight plates : Maximum 77Kg; Minimum 5kg

SHOULDER PRESS FG6004

Main frame :-

Material: Q235A, specification: gantry frame 150x50x
Sub-frame 120x50x2.0

Wire rope :-

Steel cable : PA material, Specification: Φ 5.6;
Dimension (mm) :1631x1485x1534(LxWxH)
Color : Black Silver & Flash silver black ash
Seat mat : Adjustable, PU foam; Color: dark green
Weight plates : Maximum 87Kg; Minimum 5kg





LATERAL RAISE FG6005

Main frame :-

Material: Q235A, specification: gantry frame 150x50x2.0,
Sub-frame 120x50x2.0

Wire rope :-

Steel cable : PA material, Specification: Φ 5.6;
Dimension(mm) : 1118x1290x1550(LxWxH)
Color : Black Silver & Flash silver black ash
Seat mat : Adjustable, PU foam; Color: dark green
Weight plates : Maximum 87Kg; Minimum 5kg

ROW/REAR DELTOID FG6006

Main frame:-

Material: Q235A, specification: gantry frame 150x50x2.0,
Sub-frame 120x50x2.0

Wire rope :-

Steel cable: PA material, Specification: Φ 5.6;
Dimension (mm) : 1586x1073x1544(LxWxH)
Color : Black Silver & Flash silver black ash
Seat mat : Adjustable, PU foam; Color: dark green
Weight plates : Maximum 97Kg; Minimum 5kg





ASSIST DIP CHIN FG6007

Main frame :-

Material : Q235A, specification: Sub-frame 150x50x2.0,

Wire rope :-

Steel cable : PA material, Specification: Φ 5.6;

Dimension (mm) : 975x1425x2230(LxWxH)

Color : Black Silver & Flash silver black ash

Seat mat : EVA + plywood; Color: dark green

Weight plates : Maximum 137Kg; Minimum 5kg

PULLDOWN FG6008

Main frame :-

Material: Q235A, specification: gantry frame 150x50x2.0,

Sub-frame 120x50x2.0

Wire rope :-

Steel cable: PA material, Specification: Φ 5.6;

Dimension(mm) : 1408x1322x1881(LxWxH)

Color : Black Silver & Flash silver black ash

Seat mat : Adjustable, PU foam; Color: dark green

Weight plates : Maximum 107Kg; Minimum 5kg





LOW TENSION TRAINER FG6009

Main frame :-

Material: Q235A, specification: gantry frame 150x50x2.0,
Sub-frame 120x50x2.0

Wire rope :-

Steel cable : PA material, Specification: Φ 5.6;
Dimension (mm) : 1820x990x1770(LxWxH)
Color : Black Silver & Flash silver black ash
Seat mat : PU foam + synthetic leather; Color: dark green
Weight plates : Maximum 97Kg; Minimum 5kg

HIGH PULL & LOW ROWING TRAINER FG6010

Main frame :-

Material: Q235A, specification: gantry frame 150x50x2.0,
Sub-frame 120x50x2.0

Wire rope :-

Steel cable : PA material, Specification: Φ 5.6;
Dimension(mm) : 1521x823x2247(LxWxH)
Color : Black Silver & Flash silver black ash
Seat mat : Adjustable, PU foam; Color: dark green
Weight plates : Maximum 97Kg; Minimum 5kg





BICEPS CURL FG6011

Main frame :-

Material: Q235A, specification: gantry frame 150x50x2.0,
Sub-frame 120x50x2.0

Wire rope :-

Steel cable : PA material, Specification: Φ 5.6;

Dimension(mm) : 1457x1221x1543(LxWxH)

Color : Black Silver & Flash silver black ash

Seat mat : Adjustable, PU foam; Color: dark green

Weight plates : Maximum 87Kg; Minimum 5kg

TRICEPS PRESS FG6012

Main frame :-

Material: Q235A, specification: gantry frame 150x50x2.0,
Sub-frame 120x50x2.0

Wire rope :-

Steel cable : PA material, Specification: Φ 5.6;

Dimension(mm) 1180x1130x1540(LxWxH)

Color : Black Silver & Flash silver black ash

Seat mat : Adjustable, PU foam; Color: dark green

Weight plates : Maximum 107Kg; Minimum 5kg





LEG EXTENSION FG6013

Main frame :-

Material: Q235A, specification: gantry frame 150x50x2.0,
Sub-frame 120x50x2.0

Wire rope :-

Steel cable: PA material, Specification: $\Phi 5.6$
Dimension(mm) 1205x1120x1545(LxWxH)
Color : Black Silver & Flash silver black ash
Seat mat : Adjustable, PU foam; Color: dark green
Weight plates : Maximum 107Kg; Minimum 5kg

PRONE LEG CURL FG6014

Main frame :-

Material: Q235A, specification: gantry frame 150x50x2.0,
Sub-frame 120x50x2.0

Wire rope :-

Steel cable : PA material, Specification: $\Phi 5.6$;
Dimension(mm) 1540x1100x1550(LxWxH)
Color : Black Silver & Flash silver black ash
Seat mat : Adjustable, PU foam; Color: dark green
Weight plates : Maximum 107Kg; Minimum 5kg





SEATED LEG PRESS FG6015

Main frame:-

Material: Q235A, specification: gantry frame 150x50x2.0,
Sub-frame 120x50x2.0

Wire rope :-

Steel cable: PA material, Specification: $\Phi 5.6$;

Dimension(mm) 1768x1158x1545(LxWxH)

Color : Black Silver & Flash silver black ash

Seat mat : Adjustable, PU foam; Color: dark green

Weight plates : Maximum 137Kg; Minimum 5kg

HIP ABDUCTION FG6016

Main frame :-

Material: Q235A, specification: gantry frame 150x50x2.0,
Sub-frame 120x50x2.0

Wire rope :-

Steel cable : PA material, Specification: $\Phi 5.6$;

Dimension(mm) : 1200x1340x1540(LxWxH)

Color : Black Silver & Flash silver black ash

Seat mat : PU foam; Color: dark green

Weight plates : Maximum 107Kg; Minimum 5kg





BACK EXTENSION FG6017

Main frame :-

Material: Q235A, specification: gantry frame 150x50x2.0,
Sub-frame 120x50x2.0

Wire rope :-

Steel cable : PA material, Specification: Φ 5.6;

Dimension(mm) : 1530x1340x1540(LxWxH)

Color : Black Silver & Flash silver black ash

Seat mat : PU foam; Color: dark green

Weight plates : Maximum 87Kg; Minimum 5kg

TORSO ROTATION FG6018

Main frame:-

Material: Q235A, specification: gantry frame 150x50x2.0,
Sub-frame 120x50x2.0

Wire rope :-

teel cable: PA material, Specification: Φ 5.6;

Dimension(mm) : 1530x1340x1540(LxWxH)

Color : Black Silver & Flash silver black ash

Seat mat : PU foam; Color: dark green

Weight plates : Maximum 87Kg; Minimum 5kg



GLUTE MACHINE FG6019

Main frame :-

Material: Q235A, specification: gantry frame 150x50x2.0,
Sub-frame 120x50x2.0

Wire rope :-

Steel cable : PA material, Specification: $\Phi 5.6$;

Dimension (mm) : 970x900x1540(LxWxH)

Color : Black Silver & Flash silver black ash

Chest mat : PU foam; Color: dark green

Weight plates : Maximum 87Kg; Minimum 5kg



ABDOMINAL FG6020

Main frame :-

Material: Q235A, specification: gantry frame 150x50x2.0,
Sub-frame 100x50x2.0

Wire rope :-

Steel cable : PA material, Specification: $\Phi 5.6$;

Dimension(mm) : 1579x1023x1688(LxWxH)

Color : Black Silver & Flash silver black ash

Chest mat : EVA + plywood; Color: dark green

Weight plates : Maximum 87Kg; Minimum 5kg



FUNCTIONAL TRAINER FG6021

Main frame :-

Material: Q235A, specification: Sub-frame 120x50x2.0

Wire rope :-

Steel cable : PA material, Specification: Φ 5.6;

Dimension(mm) : 1660x1026x2240(LxWxH)

Color : Black Silver & Flash silver black ash

Weight plates : Maximum 97Kg; Minimum 5kg

DUAL CABLE CROSS FG6054

Specification :-

Weight Plate : 150lb each side

Total : 300lb

Dimension(mm) : 3380x1600x2410(LxWxH)

Machine Weight : 170kg



ADJUSTABLE CABLE FG6022
CROSS OVER

Main frame :-

Material: Q235A, specification: mainframe 120x50x2.0

Wire rope :-

Steel cable : PA material, Specification: $\Phi 5.6$;

Dimension (mm) : 3775x925x2290(LxWxH)

Color : Black, Silver

Weight plates : Maximum 97Kg; Minimum 3kg



4 STATION FG6052

Specification :-

Main Tube : 50x100x3

Dimension(mm) 3450x1950x2300(LxWxH)

Machine Weight : 320kg



5 STATION FG6055

Specification :-

Main Tube : 50x100x3 Elliptical

Dimension(mm) : 5100x3450x2300(LxWxH)

machine Weight : 470kg



8 STATION FG6053

Specification :-

Main Tube : 50x100x3

Dimension(mm) : 5900x4100x2300(LxWxH)

Machine Weight : 670kg



8 STATION GYM FG6023

Main frame :-

Main Tube Size : 100x50x3.0mm

Flat Oval tube : 8x100Kgs Steel Weight Sets

Out Ctn Size : 2000x1100x1000mm,
2150x850x1100mm,
1220x1500mm, 1000x1500mm





FG6029

OLYMPIC INCLINE BENCH

Material: Q235A,
specification:
front frame 120x40x2.0
back frame 120x40x2.0
Dimension(mm) :
1470x1580x1375(LxWxH)



FG6030

OLYMPIC FLAT BENCH

Material: Q235A,
specification:
lying mat frame 120x40x2.0
Side frames 120x40x2.0
Dimension(mm) :
1590x1580x1180(LxWxH)



FG6031

OLYMPIC DECLINE BENCH

Material: Q235A,
specification: 120x40x2.0
Lying mat and head mat
Material: Plywood + cycle cotton+
synthetic leather;
Color: dark green
Dimension(mm)
1838*1590*1185(L*W*H)



FG6032

OLYMPIC MILITARY BENCH

Material: Q235A,
specification:
main frame 120x40x2.0
Dimension(mm)
1610x1250x1700(LxWxH)



FG6033

ADJUSTABLE DECLINE BENCH

Material: Q235A,
specification:
Main frame : 120*40*t2.0
Lying mat and head mat
Material: Plywood +
cycle cotton+ synthetic leather;
Dimension(mm) :
1838*1590*1185(L*W*H)



FG6034

ADJUSTABLE DUMBBELL BENCH

Material: Q235A,
specification:
Main frame : 120x40x2.0
Dimension(mm)
1726x604x518(LxWxH)



FG6035

FLAT BENCH

Material: Q235A,
specification:
Main frame :120x40x2.0
Back ground tube 120x40x2.0
Dimension (mm)
1620x600x445(LxWxH)



FG6036

ADJUSTABLE BENCH

Material: Q235A,
specification:
Main Frame : 80x40x2.0
Dimension (mm)
1362x620x440(L*W*H)



FG6037

UTILITY BENCH

Material: Q235A,
specification:
back frame 120x40x2.0
Seat support frame 120x40x2.0
Dimension (mm)
870x500x787(LxWxH)



FG6038

AB CRUNCH

Material: Q235A,
specification:
main frame 120x40x t2.0
Dimension (mm)
1980x950x1100(LxWxH)





BARBELL RACK FG6039

Material: Q235A,
specification:
Main frame :1 20x40x t2.0,
Connection rod 40x80x t2.0,
Dimension (mm) :
905x863x1388(LxWxH)



SQUAT RACK FG6040

Material: Q235A,
specification:
specification: 120x40xt2.0
Dimension(mm) :
1740x1677x1894(LxWxH)



TWO TIER DB RACK FG6041

Material: Q235A,
specification:
Main frame : 120x40xt2.0,
Strengthened tube 120x40x t2.0,
Dimension (mm) :
2365x680x885(LxWxH)



FG6042

OLYMPIC WEIGHT TREE

Material: Q235A,
specification: Main
frame120x40xt2.0, Strengthened
tube 120x40xt2.0,
Dimension (mm) :
806x707x937(LxWxH)



FG6043

ARM CURL BENCH

Material: Q235A,
specification:
Main frame120x40xt2.0
Sliding tube 80x40xt2.0 。
Dimension(mm) :
1005x788x1189 (LxWxH)



FG6044

BACK EXTENSION

Material: Q235A,
specification:
main frame 100x40xt2.0
Sliding tube 70x30xt2.0
Dimension (mm) :
1115x803x798(LxWxH)



LEG RAISE FG6045

Material: Q235A,
specification:
main frame 120x40x t2.0
Dimension (mm) :
1230x880x1650(LxWxH)



STRETCHER FG6046

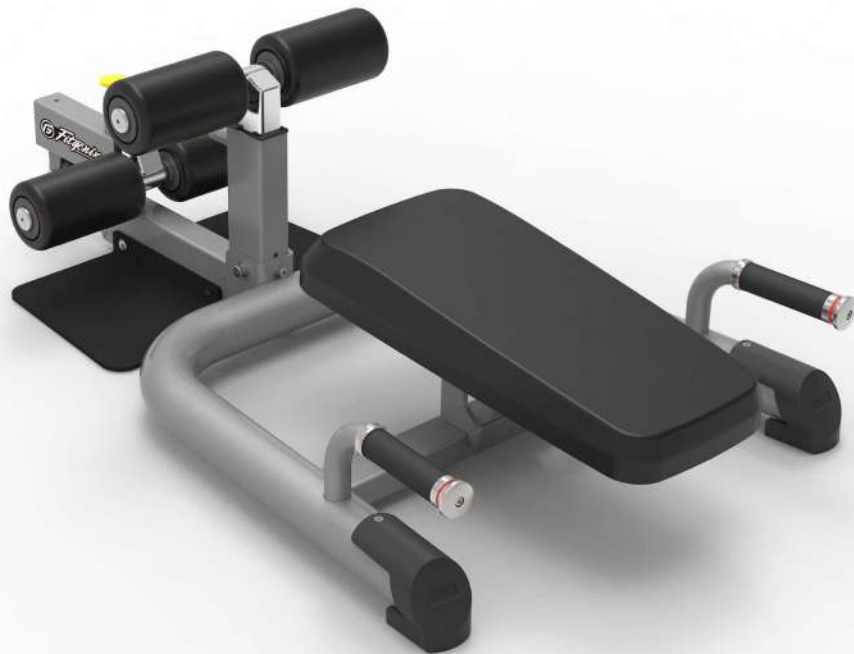
specification:-
Material: Q235A,
main frame : 120x40xt2.0
Dimension(mm) :
1392x684x1174(LxWxH)

SISSY SQUAT BENCH FG6057

Specification :-

Dimension(mm) 1252x750x388(LxWxH)

Machine Weight : 51kg

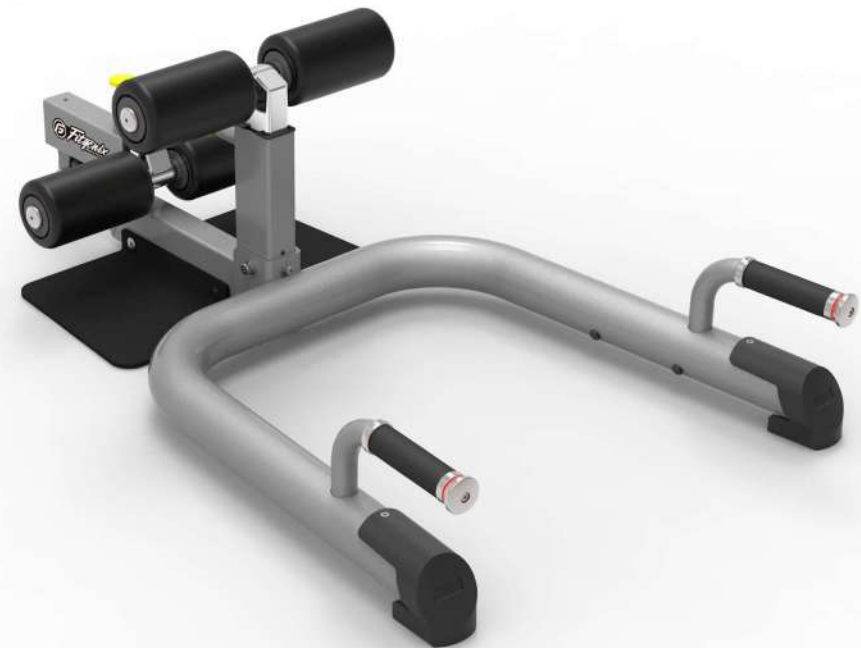


SISSY SQUAT BENCH FG6051

Specification :-

Dimension(mm) 1252x750x388(LxWxH)

Machine Weight : 33kg





FG6047

CHIN DIP LEG RAISE STATION

specification:-

Material: Q235A,

Main frame : 120x40x2.0

Dimension(mm) : 1310x1170x2165(LxWxH)



SMITH MACHINE FG6048

Material: Q235A,

specification:

Main frame 120x50x2.0,

Pillar tube : ϕ 114x2.5

Wire rope : Steel cable : PA material,

Dimension(mm) : 2185x1485x2485(LxWxH)



ANGLED LEG PRESS FG6049

Material : Q235A,

Specification :-

Main Frame : 50x150x2.0,

Dimension(mm) 2050x1000x1469(LxWxH)



Life Time Fitness

HOME SERIES

 *Fitgenix*
Life Time Fitness





TREADMILL FG T5100

1. Screen : LED touch pannel
2. DC Motor : 1.25 HP (Continuous) / 2.5 (Peak)
3. Incline : 0-12%
4. Speed : 0.5 - 16.0 km/h
5. Welking area (L.W) : 480*1300mm
6. Weight allowed : 120kgs
7. Dimension(L.W.H) : 1712*864*1317mm
8. G.W : 97Kgs
9. Vol : 0.67cbm



TREADMILL FG T3900

1. Screen : LED touch pannel
2. DC Motor : 1.25 HP (Continuous) / 2.5 (Peak)
3. Incline : 0-12%
4. Speed : 0.8 - 16 km/h
5. Welking area (L.W) : 500*1350mm
6. Weight allowed : 120kgs
7. Dimension(L.W.H) : 1725*842*1332mm
8. G.W : 91Kgs
9. Vol : 0.56cbm



TREADMILL FG T9130

1. Screen : 5" LED touch pannel
2. DC Motor : 1.0 HP (Continuous) / 2HP (Peak)
3. Incline : 0% - 12%
4. Speed : 0.8 - 12 km/h
5. Welking area (L.W) : 480*1300mm
6. Weight allowed : 110kgs
7. Dimension(L.W.H) : 1680*758*1350mm
8. G.W : 70Kgs
9. Vol : 0.51cbm



TREADMILL FG T5412

1. Screen : 5" LED touch pannel
2. DC Motor : 1.0 HP (Continuous) / 2HP (Peak)
3. Incline : 0% - 12%
4. Speed : 0.8 - 16 km/h
5. Welking area (L.W) : 420*1250mm
6. Weight allowed : 110kgs
7. Dimension(L.W.H) : 1680*782*1325mm
8. G.W : 70Kgs
9. Vol : 0.40cbm



TREADMILL FG T9119A

1. Screen : 7" LCD Screen
2. DC Motor : 1.25 HP (Continuous) / 2.5 (Peak)
3. Incline : 0% - 15%
4. Speed : 1.0 - 16 km/h
5. Welking area (L.W) : 480*1270mm
6. Weight allowed : 120kgs
7. Dimension(L.W.H) : 1860*850*1400mm
8. G.W : 79.5Kgs
9. Vol : 0.65cbm

SINGLE STATION INTEGRATED TRAINER FG6024

The main training function: push chest, butterfly breast, sitting posture row, high pull, hook foot.

Main support 50x100x2.0; Flat elliptic 40x80x2.0;

The main rotation shaft: $\varphi 16$ round steel

wire rope skin: import PA material, specifications: $\Phi 5.6$. Wire rope structure 6x19+(8x7+19), a total of 189 steel wires; Adhesive coating self-lubrication wear-resisting, cold resistant, breaking tension 1400KG.

The maximum user's weight: 130kg

Net weight 164 kg

Gross weight 120 kg

Product size: 1460x800x2080mm



THREE STATIONS INTEGRATED TRAINER FG6025

The main training function: push chest, butterfly clip chest, hack squat, parallel bars, high pull, hook foot, bend arms up pull, overhang lift leg

Main support material: Q235A; Specification: 100x50x2.0 elliptical steel pipe manufacturing, electrostatic anti-rust coating surface treatment process

Main shaft material: 45# round steel; Specification: $\Phi 17$ Seat cushion, cushion, head cushion, cushion adjustable,

The maximum weight of the counterweight block can be chosen as 66kg, 11 pieces

The maximum load is 130kg

Product size: 2311x1760x2082mm





MULTI-FUNCTION INTEGRATED TRAINER FG6026

1. State of art design with heavy duty steel structure
2. 4 station gym with 3 STEEL weight stacks of 90 Kgs each
3. Multiple Exercise Function: Leg press, Multi press, Lat pull - down, Pec fly/Rear delt, Dip/Chin with Vertical knee raise stand
4. Comfortable Seat pads
5. Durable power coated finish
6. Ergonomic Design/Scientific Biomechanics
7. Arc cover for protection

FIVE STATION INTEGRATED TRAINER FG6027

The main training functions: push chest, butterfly chest, squat, parallel bars, dangling legs, sitting row, kick, high pull, hook feet, etc
Guide bar high hardness, high precision linear guide - to ensure smooth motion

Adjustment by spring bolt adjustment

Color of end cover: highlights

The weight weight block is equipped with two sets of silent packing adhesive weight plates, 66/90kg

Squat rack can bear up to 120KG barbell plate, which is optional

The maximum user's weight: 135kg

Product size: 2550x2450x2080mm



MULTI STATION FG6028

The main training function: Chest Press, Seated Row, cable crossover, Lat pull down, Toe trainer

Main support: material: Q235A; 100x50x2.0 oval tube

Main spindle: Material: 45# Steel; Size: Φ 17

Wire: surface: PA material size: Φ 5.6

Pulley: Φ 96mm Nylon plus fiber pulley

End cap: Material: aluminium alloy

Grip: Material: PVC Color: Black

Weight plates: 66kg

Weight allowed: 170KG

Dimension: 1620x1000x2100mm



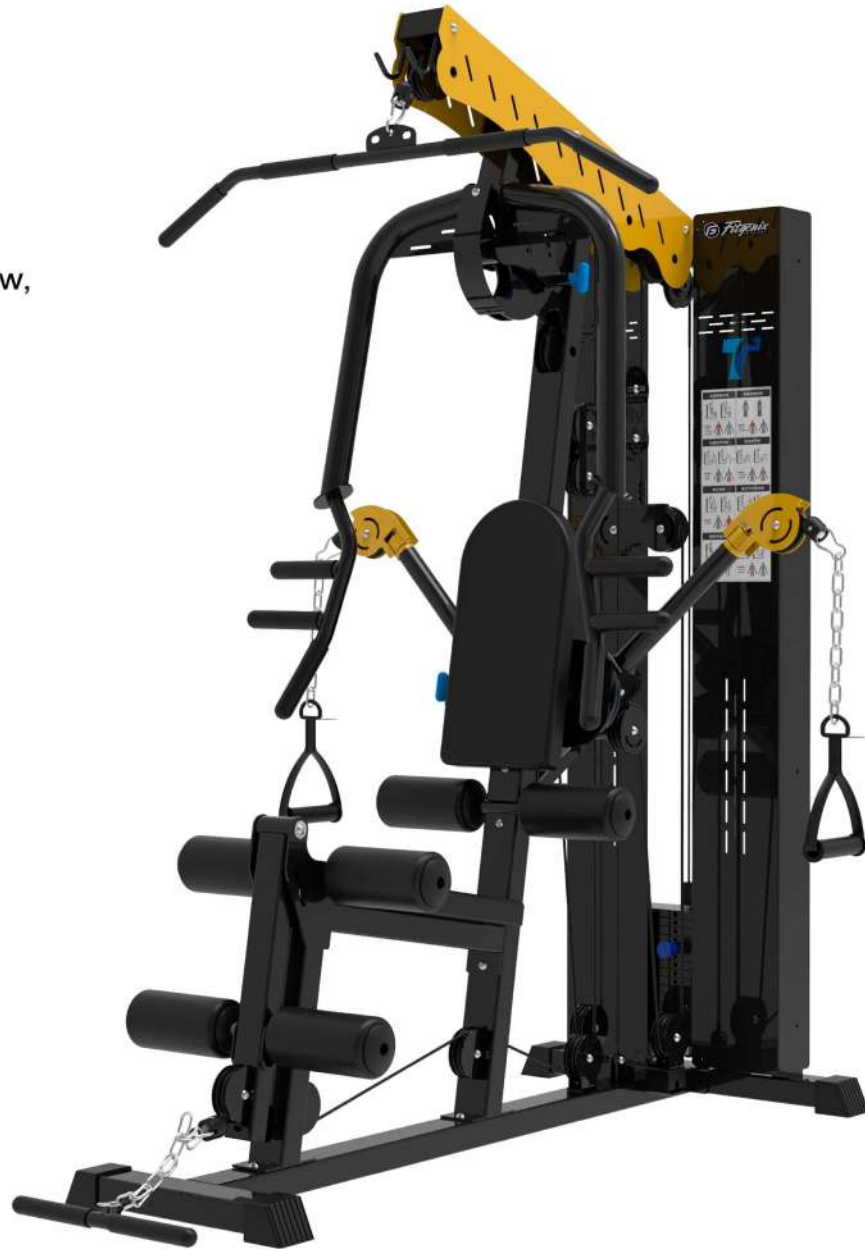
MULTI GYM FG6073 SINGLE STATION

Machine Size:1580x800x280MM

N.W:185KG

Packing Size:1820x800x280MM

Function:chest press, butterfly clip chest, seated row,
lat pull, seated leg curl etc.



MULT-FUNCTIONAL BENCH FG6069

Machine size: 1850x690x(800~1300)mm

Packing size:1400x620x250MM

Function: Dumbbell sitting posture push-ups, dumbbell sitting posture curls, dumbbell rear arm flexion and extension, dumbbell one-arm rowing etc



MULT-FUNCTIONAL BENCH FG6070

Machine size:1850x690x(800~1300)mm

Packing size:1400x620x250MM

Function:Dumbbell sitting posture push-ups, dumbbell sitting posture curls, dumbbell rear arm flexion and extension, dumbbell one-arm rowing etc.



WORKBENCH MULTI-SYSTEM FG6065

Machine size:1500x1500x2250MM N.W:125KG

G.W:165KG

Packing Size:2270x900x300MM

Function:forward push, high pull(front), high pull(rear),low pull,kick leg, standing rear kick, standing pull, crank arm pull, abdominal lift etc.



MULTI-FUNCTIONAL BENCH FG6066

Machine size: 2800x1450x(1400~1950)MM.

Packing size:1500x730x300MM

+1400x620x250MM

Function: forward push, high pull(front), high pull(rear), low pull, kick leg, standing rear kick, standing pull, crank arm pull, abdominal lift, parallel bars, lateral leg extension etc.



WORKBENCH FG6067 **MULTI-SYSTEM**

Machine size: 1500x1500x2250MM N.W:175KG

G.W:217KG

Packing Size: 2270*900*300MM +
1400*620*250MM

Function: forward push, high pull(front), high pull(rear),low pull,kick leg, standing rear kick, standing pull, crank arm pull, abdominal lift, lateral leg extension etc.



MULTI GYM FG6068 **3 STATION**

Machine size: 2900x2280x1800MM.

Packing size: 1800x900x600MM +
1600x530x400MM

Function:High pulls, kicks, biceps/triceps, standing calves, press training etc.



Life Time Fitness



FG500

SERIES



Fitgenix
Life Time Fitness



THE **FG500** SERIES ADVANTAGES

High quality super-sized bearings

Bring excellent
performance



Chromed weight plate horn

Prevents rust and
scratch.



Unique link-rod design

Ensures smooth range
of motion



Multiple seat adjustment

Fit people of
different heights.





CHEST & DECLINE COMBO FG7001

Main Tube Size 100 x 50x3.0mm Flat Oval tube
Assembly Size:1605x1602x1471mm
N.W:185.5kgs , GW:194.5kgs
Weight Adjustment With Discs
Effective For Overall Chest Workout
One-touch Chair Adjustment
Wooden Cartoon Size:1500x1000x460mm



INCLINE CHEST PRESS FG7002

Main Tube Size 100 x 50x3.0mm Flat Oval tube
Assembly Size:1809x1716x1440mm
N.W:249kgs ,GW:263kgs
Weight Adjustment With Discs
Effective For Overall Chest Workout
One-touch Chair Adjustment
Wooden Cartoon Size:1500x1100x550mm



WIDE PULL DOWN (Rear) FG7003

Main Tube Size 100 x 50x3.0mm Flat Oval tube
Assembly Size:1780x1404x2050mm
N.W:171kgs ,GW:187kgs
Control Weight With Plates
Concentrating On The Lower Part Of Latissii
Dorsi
One Touch Seat Controlling
Wooden Cartoon Size:1800x850x400mm



NARROW PULL DOWN FG7004

Main Tube Size 100 x 50x3.0mm Flat Oval tube
Assembly Size:1820x1404x1987mm
N.W:184kgs ,GW:198kgs
Weight Adjustment With Discs
Center-Intensive workout
One-touch chair adjustment
Wooden Cartoon Size:1855x850x450mm



LAT PULL DOWN FG7005

Main Tube Size 100 x 50x3.0mm Flat Oval tube
Assembly Size:1990x1600x1300mm
N.W:260.5kgs GW:283kgs
Wooden Cartoon Size: 1700x1200x550mm



LOW ROW FG7006

Main Tube Size 100 x 50x3.0mm Flat Oval tube
Assembly Size:1473x1345x1447mm
N.W:186kgs ,GW:204kgs
Realizing Same Movement As One Arm -
Dumb-bell Row
Realizing Same Movement As Barbell Row
Compartmental Stimulations for each part
according to waist angle
Wooden Cartoon Size:1600x1500x600mm



SEATED ROW FG7007

Main Tube Size 100 x 50x3.0mm Flat Oval tube
Assembly Size:1555x1097x1352mm
N.W:124kgs ,GW:134kgs
Control Weight With Plates
Applying 2 handles Angle
One Touch Seat Controlling
Wooden Cartoon Size:1540x750x590mm



SHOULDER PRESS FG7008

Main Tube Size 100 x 50x3.0mm Flat Oval tube
Assembly Size:1880x1687x1268mm
N.W:238kgs ,GW:253kgs
Wooden Cartoon Size:1700x1300x460mm



SEATED ABDOMINAL FG7009

Main Tube Size 100 x 50x3.0mm
Flat Oval tube
Assembly Size:1250x1050x700mm
N.W:117.5kgs



SEATED BICEPS FG7010

Main Tube Size 100 x 50x3.0mm
Flat Oval tube
Assembly Size:1600x1180x400mm
N.W:226kgs



SEATED TRICEPS FG7011

Main Tube Size 100 x 50x3.0mm
Flat Oval tube
Assembly Size: 1840x1070x530mm
N.W:195kgs



LEG PRESS BACK FG7012

Main Tube Size 100 x 50x3.0mm
Flat Oval tube
Assembly Size:1520x1350x450mm
N.W:155kgs GW:205kgs



KNEELING LEG CURL FG7013

Main Tube Size 100 x 50x3.0mm Flat Oval tube
Assembly Size:1380x1450x1300mm
N.W:123.5kgs ,GW:133kgs
Weight Ajustment With Discs
Effective Development of biceps
Femoris Isolation Effect Maximized By Separate
Leg Workout
Wooden Cartoon Size:1420x1020x500 mm



LEG EXTENSION FG7014

Main Tube Size 100 x 50x3.0mm Flat Oval tube
Assembly Size:1466x1423x1100mm
N.W:138kgs ,GW:147kgs
Effective For Developing
Musculusquadriceps Femoris
As a Lower Body Workout Machine
Wooden Cartoon Size:1420x870x680mm



SQUAT FG7015

Main Tube Size 100 x 50x3.0mm Flat Oval tube
Assembly Size:1850x960x660mm
N.W:173kgs ,GW:215kgs

AB CRUNCH FG7016

Main Tube Size 100 x 50x3.0mm Flat Oval tube

Assembly Size 2400*11500*1400mm

One-touch Backrest Adjustment

Exercise Effective - Leg

N.W:244kgs G.W: 317Kgs

Wooden Case: 1#: 1880x980x350mm

2#: 895 x 800 x 760mm



45° DEGRESS LEG PRESS FG7017

Main Tube Size 100 x 50x3.0mm Flat Oval tube

Assembly Size:1511x1180x1337mm

Wooden Case Size:1370*1010*700mm

N.W:134kgs G.W: 189Kgs

Adjustable Foot Holder



Life Time Fitness



FG800

SERIES



A woman with her hair in a ponytail is using a pull-up bar in a gym. She is looking towards the camera with a focused expression. The gym has a dark ceiling with recessed lights and red structural beams. In the background, another person is visible, possibly a man, also in a gym setting.

THE FG600 SERIES ADVANTAGES



CHEST PRESS FG 8000

Dimension(mm) : 1956x1097x1178 (LxWxH)

Stack Weight Maximum: 150 kg * 2

Machine Weight : 150 Kg



ROW FG 8001

Dimension(mm) : 1471x1365x1251 (LxWxH)

Stack Weight Maximum: 150 kg * 2

Machine Weight : 150 Kg





SHOULDER PRESS FG 8002

Dimension(mm) : 1714x1273x1259 (LxWxH)

Stack Weight Maximum: 150 kg * 2

Machine Weight : 148 Kg



LAT PULL DOWN FG 8003

Dimension(mm) : 1407x1839x1831 (LxWxH)

Stack Weight Maximum: 150 kg * 2

Machine Weight : 128 Kg



LEG PRESS FG 8004

Dimension(mm) : 2173x1866x1543 (LxWxH)

Stack Weight Maximum: 200 kg * 2

Machine Weight : 230 Kg



PRONE GLUTE KICK BACK FG 8005

Dimension(mm) : 1282x1422x1220 (LxWxH)

Stack Weight Maximum: 150 kg

Machine Weight : 90 Kg



HIP ABDUCTION / ADDUCTION FG 8006

Dimension(mm) : 1525x930x1450 (LxWxH)

Stack Weight Maximum: 150 kg

Machine Weight : 150 Kg



Life Time Fitness



NEW
STRENGTH SERIES



Fitgenix
Life Time Fitness

HALF POWER RACK FG9000

Specification :-

Main Tube : 50x100x3 Elliptical

Dimension(mm) : 1400x1500x2500(LxWxH)

machine Weight : 235kg



HALF POWER RACK WITH PLATFORM FG9001

Weight : 553kg
Length : 3200 mm
Width : 3200 mm
Height : 2500 mm



POWER RACK FG9002

Length : 1869 mm
Width : 1724 mm
Height : 2300 mm
Machine Weight : 216 kg



FUNCTIONAL GYM FG9003 (Smith+Cable cross)

Remarks : Painting color Silvery or
Dark Gray.

Weight : 130LBx2

Length : 2351 mm

Width : 1367 mm

Height : 2159 mm

Stack Weight : 109 kg

Stack Weight : 240 lb

Machine Weight : 260 kg



MULTI-FUNCTION SMITH FG9004

Machine Size:1400x2100x2280MM N.W:325KG

G.W:360KG

Packing Size:2200x700x450MM

Function:Cross over/ standing lat pull, sitting lat pull, barbell bar left and right rotation and push up, single parallel bars, barbell bar standing lifting, barbell shoulder squatting, push ups, pull ups, biceps etc.



MULTI-FUNCTION SMITH FG9005

Machine Size:1700x2200x2230MM N.W:315KG

G.W:350KG

Packing Size:2200x600x450MM

Function:Cross over/standing lat pull, sitting lat pull, barbell bar left and right rotation and push up, single parallel bars, barbell bar standing lifting, barbell shoulder squatting, push ups, pull ups, biceps etc.



DUAL CABLE CROSS FG9006

Wall Mounted

Remark : Paint color PF89 Black

2x79 LBS, 20GP : 90PCS

Dimension(mm) : 1869x1724x2300

(LxWxH)

Stack Weight : 2x79 LBS

Machine Weight : 6x103 kg



CLIMBER FG9007

Assembly size : 1200x1250x2380mm(LxWxH)

Quick disassembly aluminum foot pedal

Movement distance : up & down 500mm

Resistance Level: 8 Levels

Max loading weight : 150kg

Drive : synchronous belt

Incline angle : 75

Power : 0.2kw

Net weight : 140kg

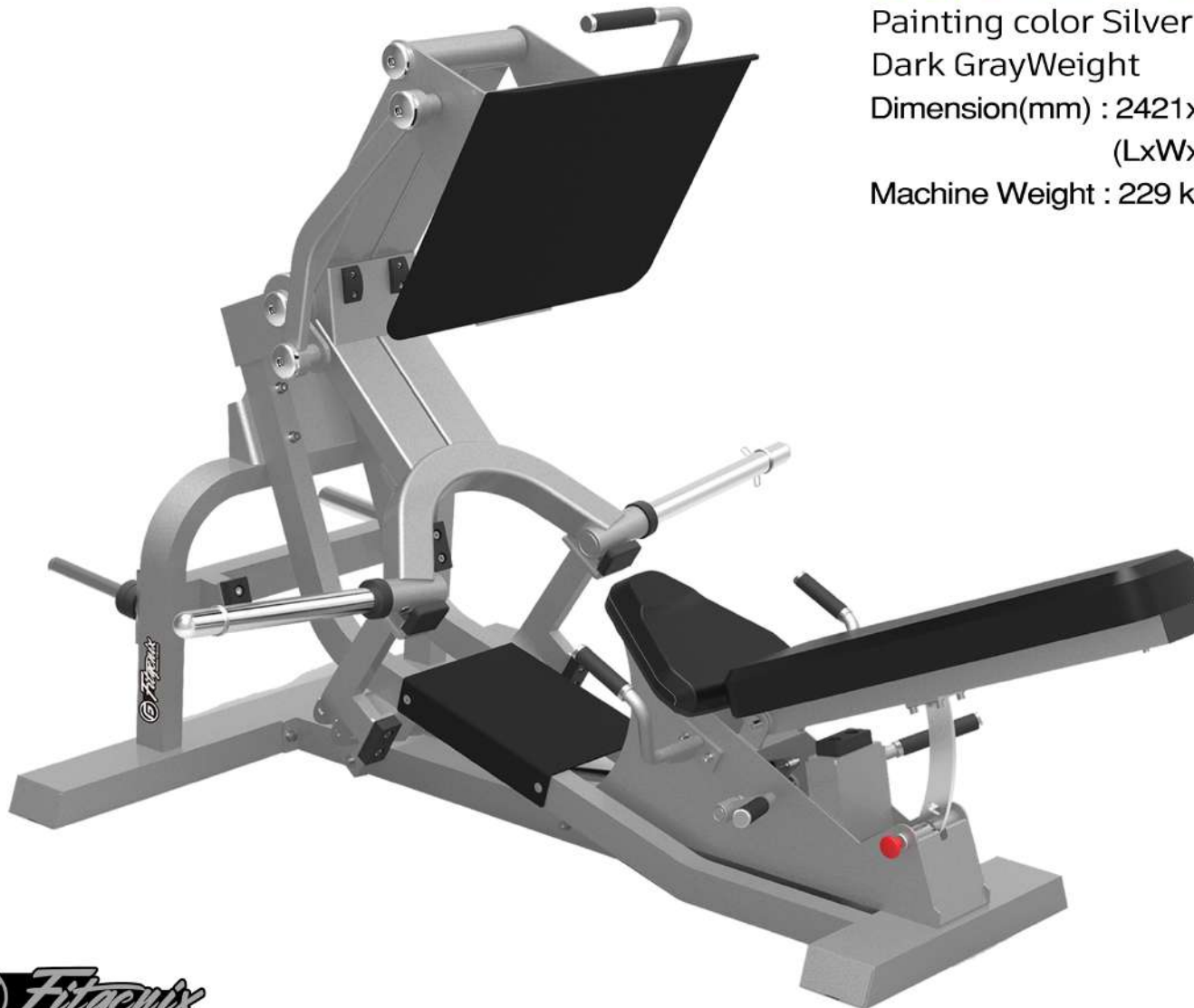


PLATE LOADED SQUAT PRESS FG9008

Painting color Silvery or
Dark GrayWeight

Dimension(mm) : 2421x1680x1572
(LxWxH)

Machine Weight : 229 kg



OLYMPIC FLAT BENCH FG6009

Remarks : Painting color Silvery or
Dark Gray

Free Weight

Length : 1710 mm

Width : 1635 mm

Height : 1296 mm

Machine Weight : 79 kg



OLYMPIC INCLINE BENCH FG6010

Free Weight

Length : 1800 mm

Width : 1710 mm

Height : 1417 mm

Machine Weight : 79 kg



OLYMPIC DECLINE BENCH FG6011

Free Weight

Painting Color Silver Or Dark Gray

Machine Weight : 79 kg



ADJUSTABLE FLAT & DECLINE BENCH

FG9012

SPECIFICATION:

Free Weight

Painting Color Silver Or Dark Gray

Dimension(mm) :

1465x878x365(LxWxH)

Machine Weight : 46 kg



PREACHER CURL

FG9013

Remarks : Painting color Silvery or Dark Gray

Machine Weight : 48 kg

Free Weight

Length : 1047 mm

Width : 752mm

Height : 1019 mm



AB-BACK MACHINE

FG9014

Painting color Silvery or Dark Gray

Weight

Dimension(mm) : 1354x732x932 (LxWxH)

Machine Weight : 50 kg



MULTI-PURPOSE FG9015

Remarks : Painting color Silvery or
Dark Gray

Free Weight

Length : 1440 mm

Width : 732mm

Height : 1000 mm

Machine Weight : 37 kg



FLAT TO INCLINE UTILITY BENCH FG9016

Remarks : Painting color Silvery or
Dark Gray

Weight : 130LBx2

Length : 1485 mm

Width : 672 mm

Height : 430 mm

Machine Weight : 42 kg



0-90 ADJUSTABLE UTILITY BENCH FG9017

Machine size:1480x590x440MM

Tube: 100x50mm
rectangle steel tube



TWO TIER DUMBBELL RACK FG9018

Specification :-

Free Wait

Dimension(mm) : 2296x643x799(LxWxH)

machine Weight : 63kg



SQUAT RACK FG9019

Specification :-

Dimension(mm) : 1510x1465x2465mm(LxWxH)

machine Weight : 183KG



FULL CAGE - FUNCTIONAL TRAINER FG9020

Specification :-

Dimension(mm) : 2940x1680x2465mm(LxWxH)

Function : weight plate, weight lifting, VIPR, horizontal bar

Machine Weight : 630KG



MUTI - FUCTION STRECHER FG9021

Specification :-

Dimension(mm) : 1900x650x1050mm(LxWxH)

Main Frame : 80x40xT2.0

Muscle trained : Muscle groups(shoulder,chest,back,leg)





Fitgenix
Life Time Fitness

First you feel like Dying. Then you feel Reborn



Headquarter Address ; 23 Crowland Road n 15 6UL

MOBILE : +44 7808 835283

www.fitgenix.uk